

**Research and Special Projects Division**  
**MEMORANDUM**

DATE: September 19, 2014

TO: Chief Michael J. DeLeo

FROM: Captain William Butler

SUBJECT: Crime Analysis of Select Firearm Incidents (2011-2013)

Attached is the Crime Analysis report requested by the Council on Gun Violence Strategic Planning Subcommittee concerning firearm related violent crime. The report includes their request for an analysis of Homicides, Manslaughters, Street Robberies (UCR Highway Robbery) and Aggravated Assaults reported on UCR during calendar years 2011, 2012 and 2013. The 805 incidents were analyzed and mapped according to incident location, victim and suspect demographics, and reported home addresses. The results of the analysis are included in the attached maps and graphs.

The analysis clearly identifies that based upon the time period and crimes reviewed; black males between the ages of 18-29 represented a majority of both suspect involvement and victimization.

Of additional note are two areas of concern mentioned by members of the planning subcommittee. They are the incidence of gang involvement and domestic relationships. As mentioned in the graphs, incidents of street gang involvement in these crimes from 2011-2013 was 10% for suspects and 7% for victims. Based upon the same data and time period, only one robbery and 35 Aggravated Assaults involved a domestic relationship (4.5% overall).

Though the subcommittee did not request the 2014 information, I had our crime analysis personnel analyze the data for comparison. UCR statistics compiled by the Department for the time period of January through June 2014 indicated similar results for both suspect and victim demographics. Of the 152 qualifying crimes, gang affiliation was reported as 8% suspect and 9% victim. Moreover, firearm crimes with a domestic nexus represented less than 4% of the incidents reported in first half of 2014.

Respectfully submitted.



## TALLAHASSEE POLICE DEPARTMENT CRIME ANALYSIS UNIT



234 East 7<sup>th</sup> Avenue  
Tallahassee, Florida 32303

September 19, 2014

Dear Captain Butler,

Thank you for your recent contact with the City of Tallahassee Police Department Trends and Tactics Section (Crime Analysis Unit). In response to your request for crime statistics, please review the following information and find the documents attached to this page.

Analysis was conducted and information released pursuant to Chapter 119 of the Florida State Statutes. The primary statistical and/or geographical data source(s) used to complete this request was/were:

- PremierOne™ Computer Aided Dispatch (CAD)
- PrinTrak Law Records Management System (LRMS)
- Hummingbird Business Intelligence (BI) Query
- Omega CrimeView ® and ArcGIS
- Traffic and Criminal Software (TraCS)
- Uniform Crime Reports (UCR)

### ***Specific Details Narrative***

**Time Period:** 1/1/2011 to 12/31/2013 **Area:** Citywide

#### **Detailed Description of Product Provided:**

Gun violence initiative group statistical highlights for 2011, 2012, 2013

**Exceptions or Exclusions:** Not Applicable

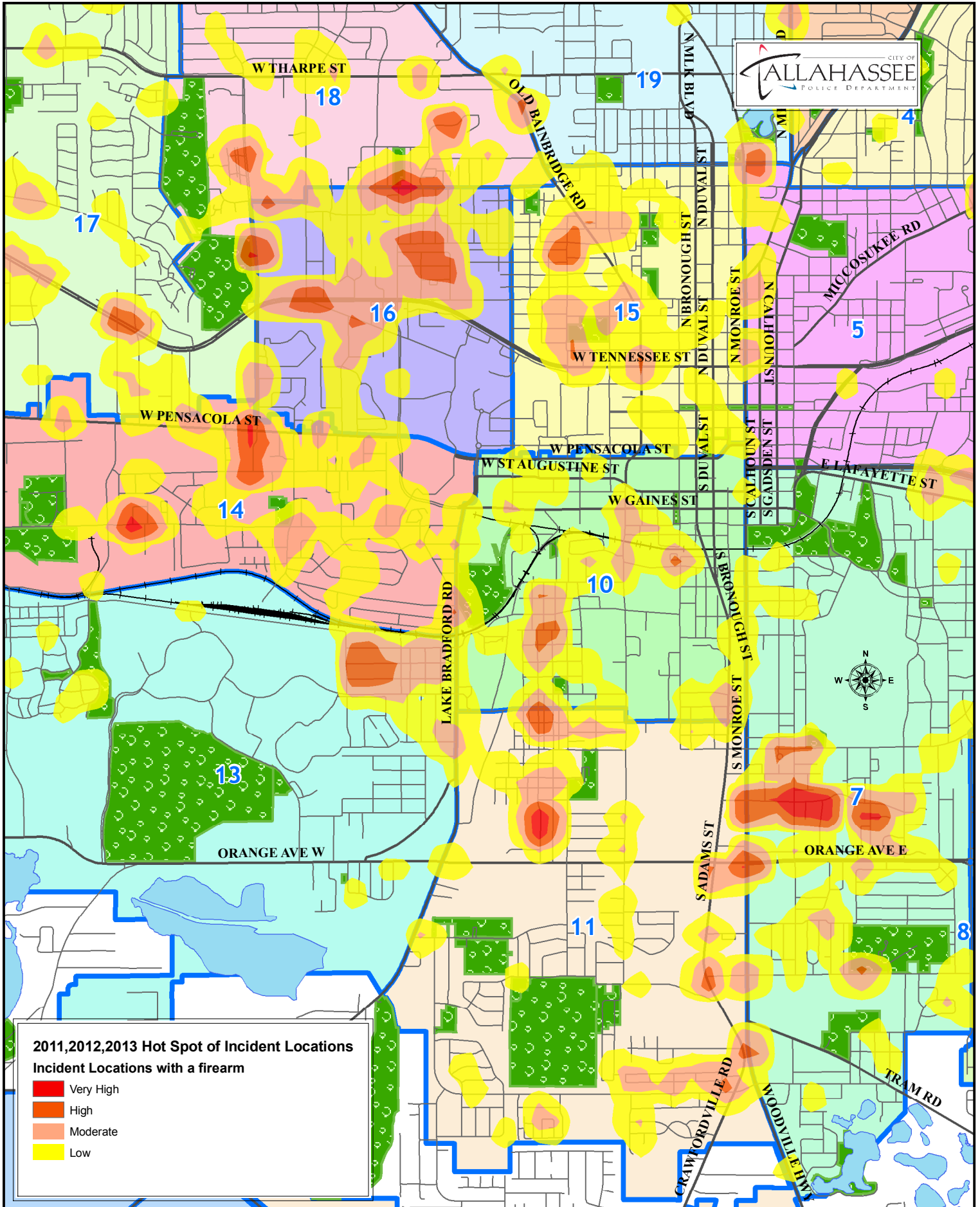
**Reason:** Not Applicable

If you should have any questions or concerns, please feel free to contact the Crime Analysis Unit. This report was completed by Antwan Wiley, Southern Sector Crime Analyst, (850) 891-4308

Attachment: Yes

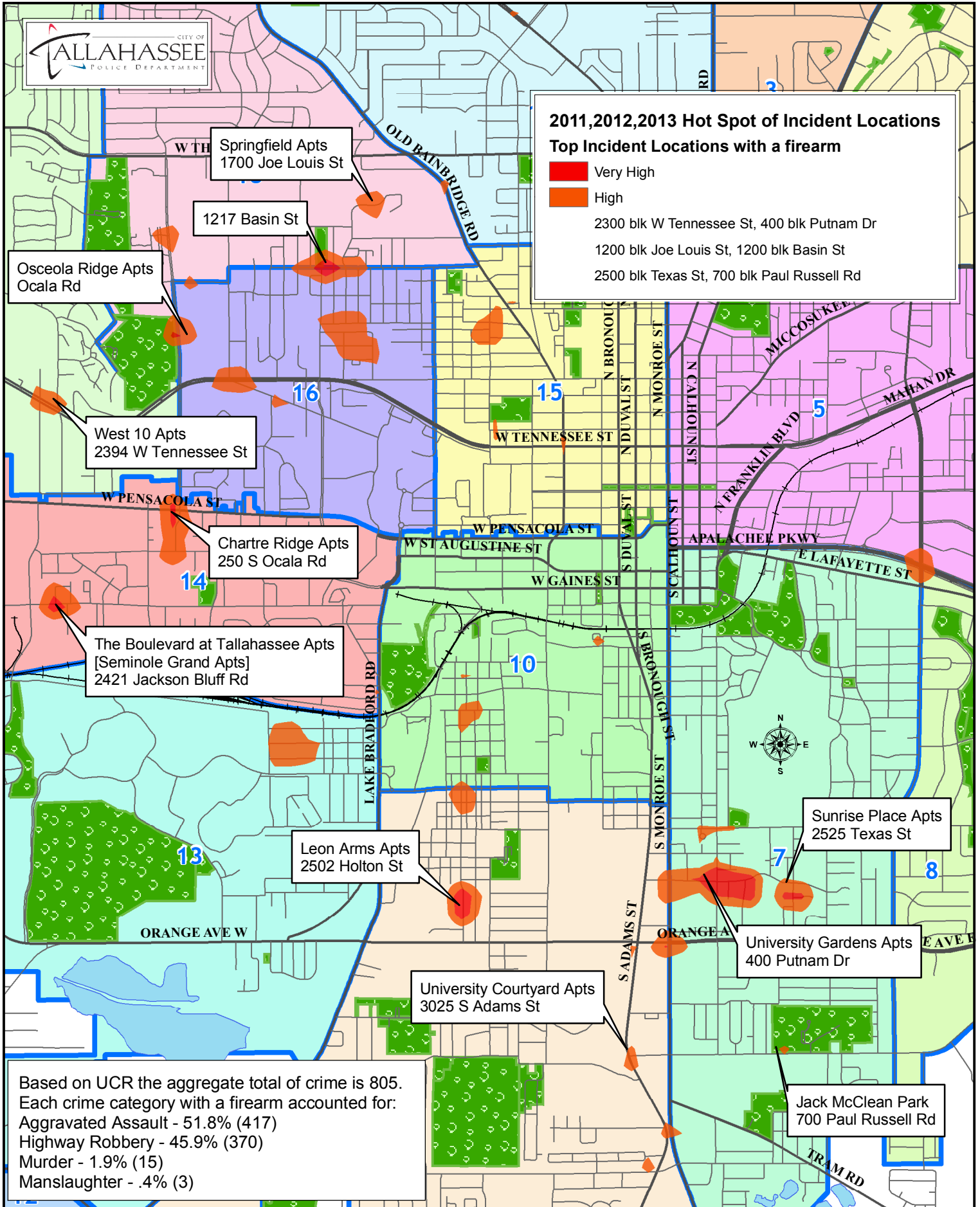
**Disclaimer:** This product has been compiled from the most accurate source data from Leon County, the City of Tallahassee, and the Leon County Property Appraiser's Office. This product is for reference purposes only and is not to be construed as a legal document or survey instrument. Any reliance on the information contained herein is at the user's own risk. Leon County, the City of Tallahassee, and the Leon County Property Appraiser's Office assume no responsibility for any use of the information contained herein or any loss resulting therefrom. Dependent upon each individual request, information may be from a different statistical source or combination of sources, resulting in variable information. Calls for service and occurred criminal data change daily; therefore, while the product attached to this document was accurate at the time of completion, it may no longer be current.

# 2011, 2012, AND 2013 HOT SPOT OF FIREARM INCIDENT LOCATIONS



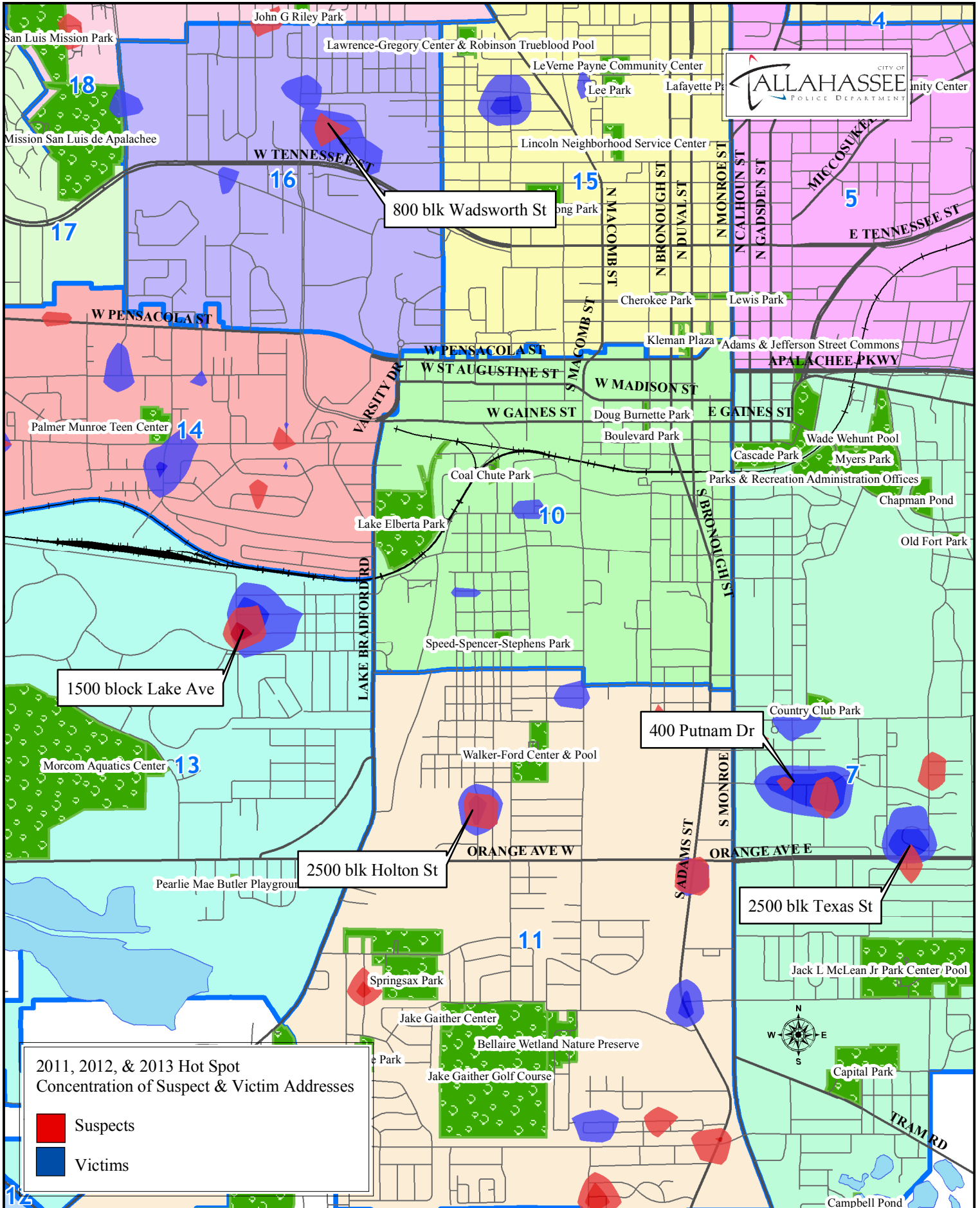
NOTE: This product has been compiled from the most accurate sources data from Leon County, the City of Tallahassee, and the Leon County Property Appraiser's Office. However, this product is for reference purposes only and is not to be construed as a legal document or survey instrument. Any reliance on the information contained herein is at the user's own risk. Leon County, the City of Tallahassee, and the Leon County Property Appraiser's Office assume no responsibility for any use of the information contained herein or any loss resulting therefrom.

# 2011, 2012, AND 2013 HOT SPOT OF FIREARM INCIDENT LOCATIONS



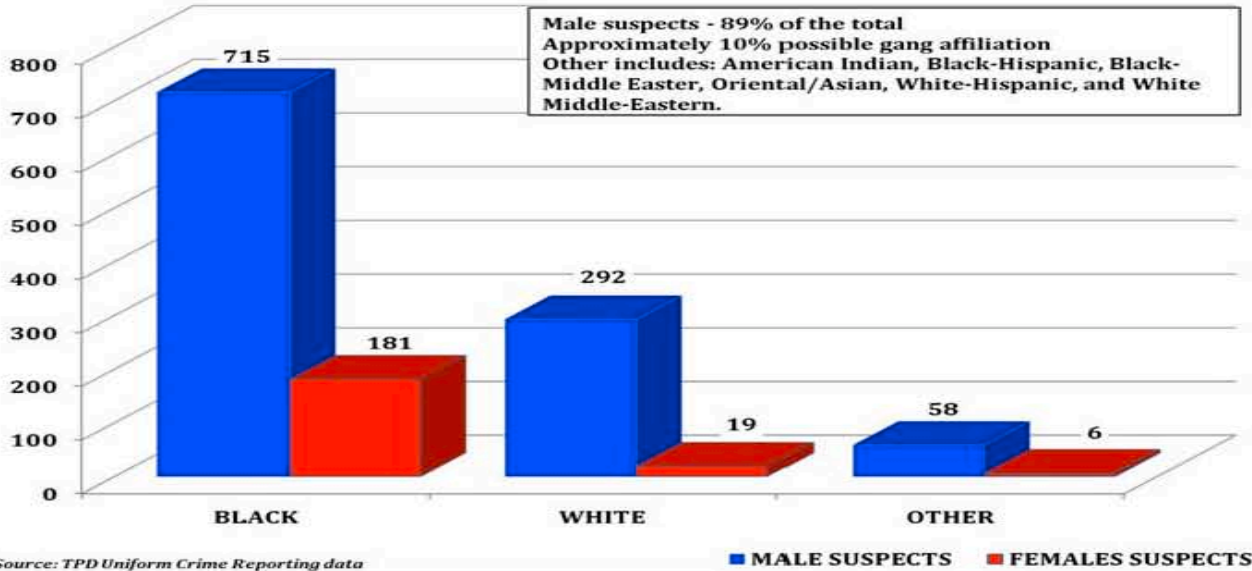
NOTE: This product has been compiled from the most accurate source data from Leon County, the City of Tallahassee, and the Leon County Property Appraiser's Office. However, this product is for reference purposes only and is not to be construed as a legal document or survey instrument. Any reliance on the information contained herein is at the user's own risk. Leon County, the City of Tallahassee, and the Leon County Property Appraiser's Office assume no responsibility for any use of the information contained herein or any loss resulting therefrom.

# 2011, 2012, AND 2013 HOT SPOT OF SUSPECT AND VICTIM ADDRESSES

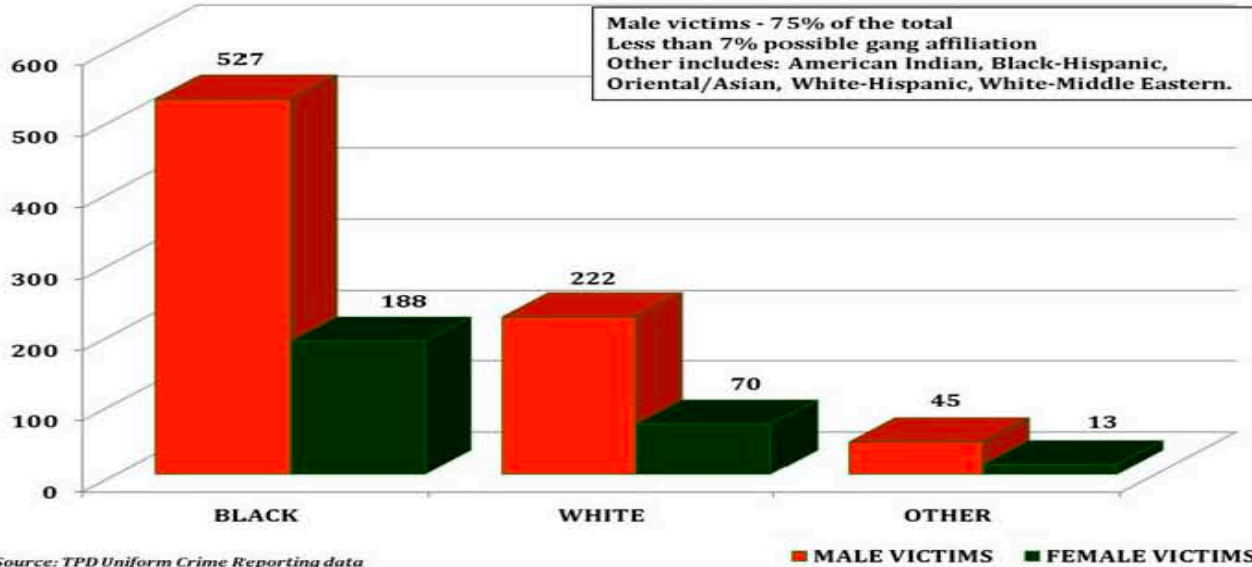


NOTE: This product has been compiled from the most accurate sources data from Leon County, the City of Tallahassee, and the Leon County Property Appraiser's Office. However, this product is for reference purposes only and is not to be construed as a legal document or survey instrument. Any reliance on the information contained herein is at the user's own risk. Leon County, the City of Tallahassee, and the Leon County Property Appraiser's Office assume no responsibility for any use of the information contained herein or any loss resulting therefrom.

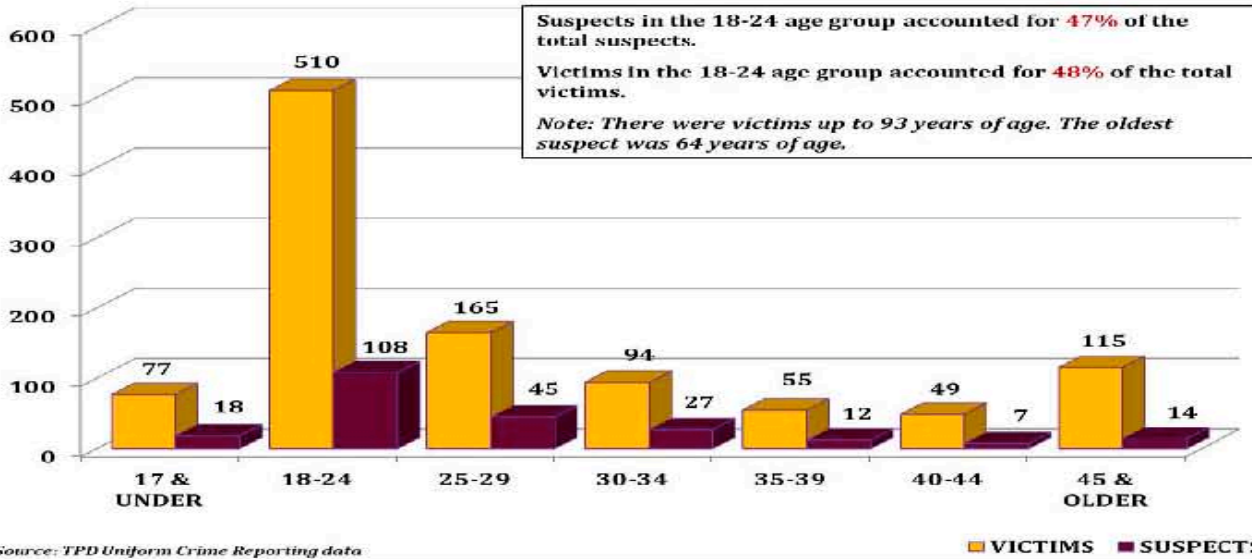
**UCR Violent Crimes with Firearms  
Suspect Aggregate Race and Sex Totals for 2011, 2012, 2013**



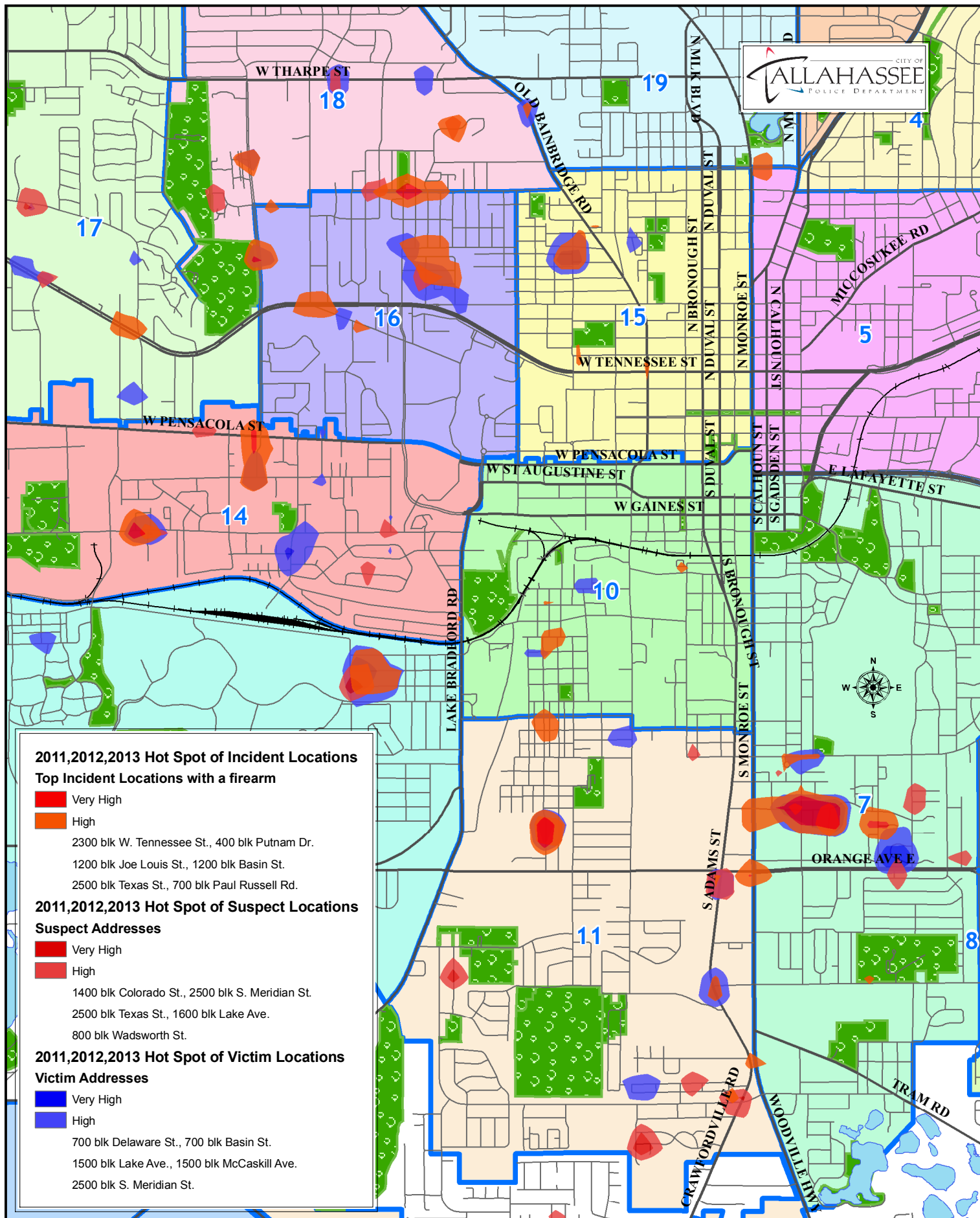
**UCR Violent Crimes with Firearms  
Victim Aggregate Race and Sex Totals for 2011, 2012, 2013**



**UCR Violent Crimes with Firearms  
Victim and Suspect Age Group Totals for 2011, 2012, 2013**



2011, 2012, AND 2013 HOT SPOT OF SUSPECT AND VICTIM ADDRESSES AND FIREARM INCIDENT LOCATIONS



NOTE: This product has been compiled from the most accurate source data from Leon County, the City of Tallahassee, and the Leon County Property Appraiser's Office. However, this product is for reference purposes only and is not to be construed as a legal document or survey instrument. Any reliance on the information contained herein is at the user's own risk. Leon County, the City of Tallahassee, and the Leon County Property Appraiser's Office assume no responsibility for any use of the information contained herein or any loss resulting therefrom.



## TALLAHASSEE POLICE DEPARTMENT CRIME ANALYSIS UNIT



234 East 7<sup>th</sup> Avenue  
Tallahassee, Florida 32303

September 19, 2014

Dear Captain Butler,

Thank you for your recent contact with the City of Tallahassee Police Department Trends and Tactics Section (Crime Analysis Unit). In response to your request for crime statistics, please review the following information and find the documents attached to this page.

Analysis was conducted and information released pursuant to Chapter 119 of the Florida State Statutes. The primary statistical and/or geographical data source(s) used to complete this request was/were:

- PremierOne™ Computer Aided Dispatch (CAD)
- PrinTrak Law Records Management System (LRMS)
- Hummingbird Business Intelligence (BI) Query
- Omega CrimeView ® and ArcGIS
- Traffic and Criminal Software (TraCS)
- Uniform Crime Reports (UCR)

### ***Specific Details Narrative***

**Time Period:** 1/1/2014 to 6/30/2014 **Area:** Citywide

**Detailed Description of Product Provided:**

Gun violence initiative group statistical highlights for 2014

**Exceptions or Exclusions:** Not Applicable

**Reason:** Not Applicable

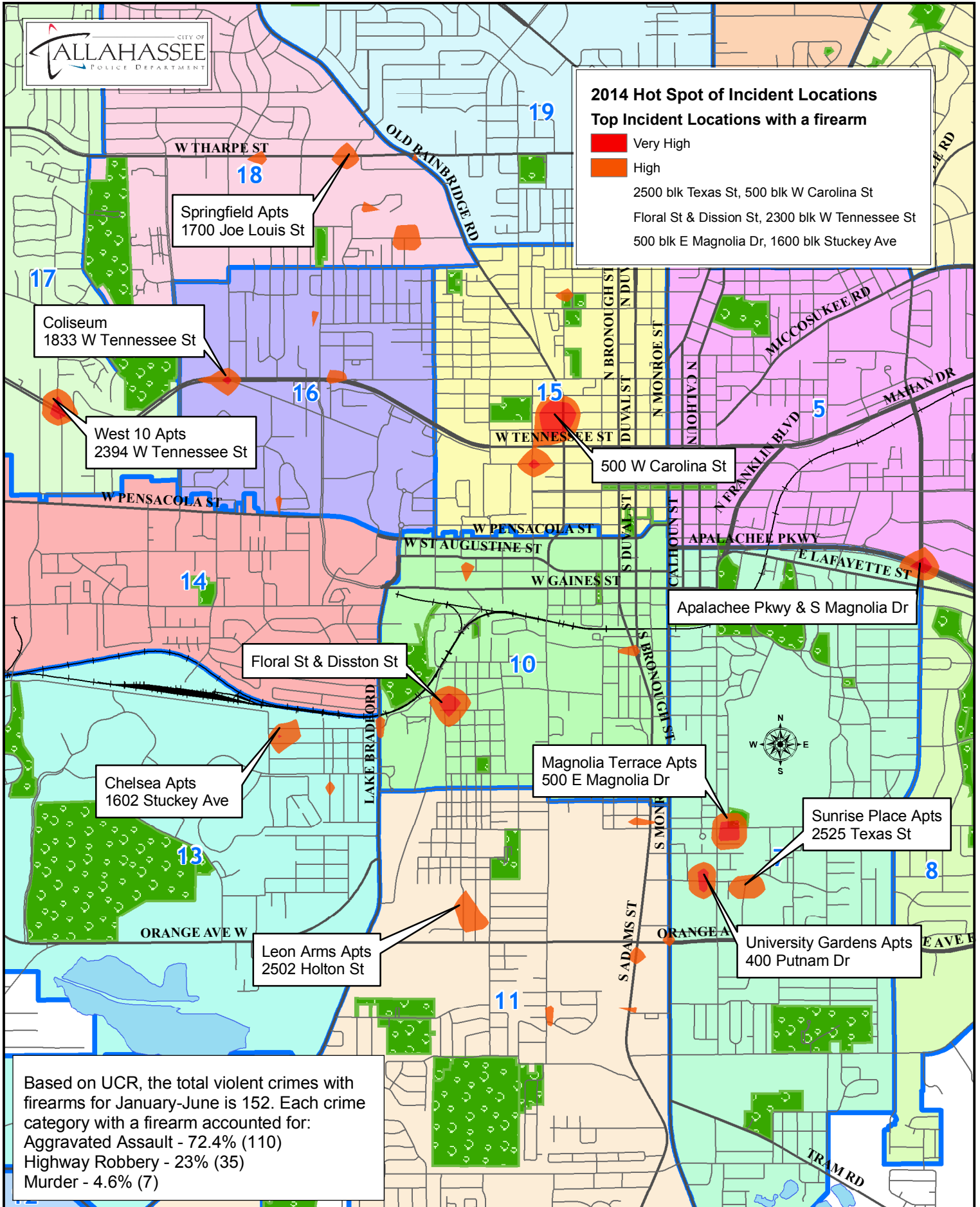
If you should have any questions or concerns, please feel free to contact the Crime Analysis Unit. This report was completed by Antwan Wiley, Southern Sector Crime Analyst, (850) 891-4308

Attachment: Yes

**Disclaimer:** This product has been compiled from the most accurate source data from Leon County, the City of Tallahassee, and the Leon County Property Appraiser's Office. This product is for reference purposes only and is not to be construed as a legal document or survey instrument. Any reliance on the information contained herein is at the user's own risk. Leon County, the City of Tallahassee, and the Leon County Property Appraiser's Office assume no responsibility for any use of the information contained herein or any loss resulting therefrom. Dependent upon each individual request, information may be from a different statistical source or combination of sources, resulting in variable information. Calls for service and occurred criminal data change daily; therefore, while the product attached to this document was accurate at the time of completion, it may no longer be current.

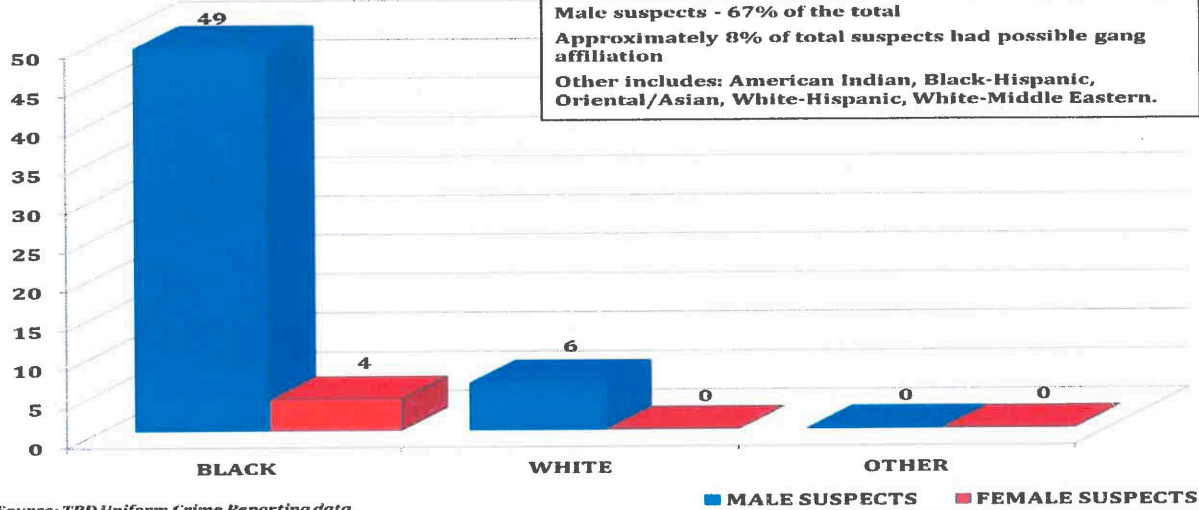


# 2014 HOT SPOT OF FIREARM INCIDENT LOCATIONS

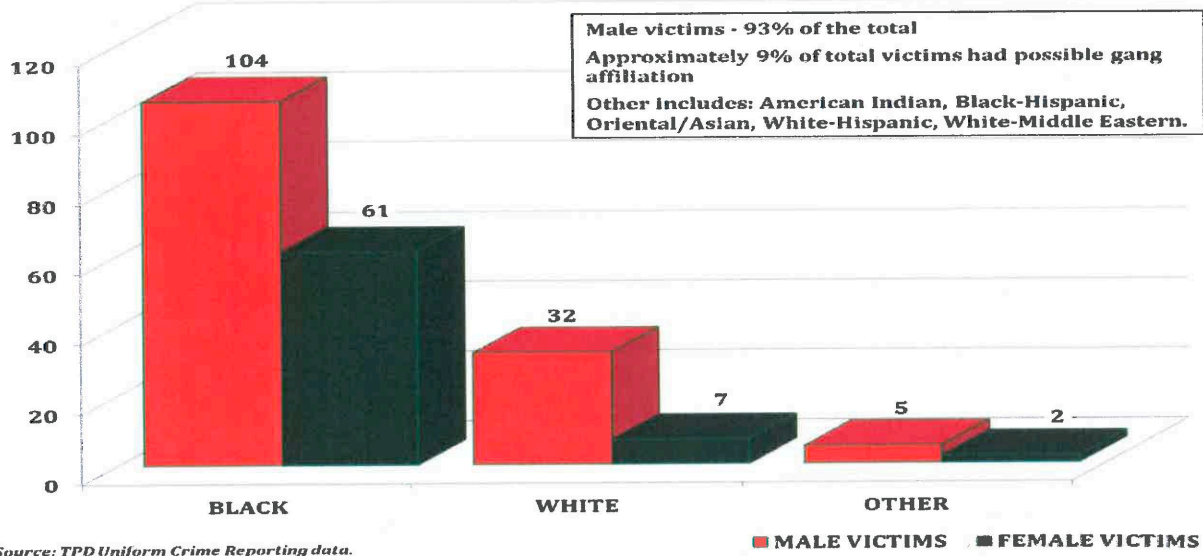


NOTE: This product has been compiled from the most accurate source data from Leon County, the City of Tallahassee, and the Leon County Property Appraiser's Office. However, this product is for reference purposes only and is not to be construed as a legal document or survey instrument. Any reliance on the information contained herein is at the user's own risk. Leon County, the City of Tallahassee, and the Leon County Property Appraiser's Office assume no responsibility for any use of the information contained herein or any loss resulting therefrom.

**UCR Violent Crimes with Firearms  
Suspect Race and Sex Totals for 2014**



**UCR Violent Crimes with Firearms  
Victim Race and Sex Totals for 2014**



**UCR Violent Crimes with Firearms  
Suspect and Victim Age Groups for 2014**

